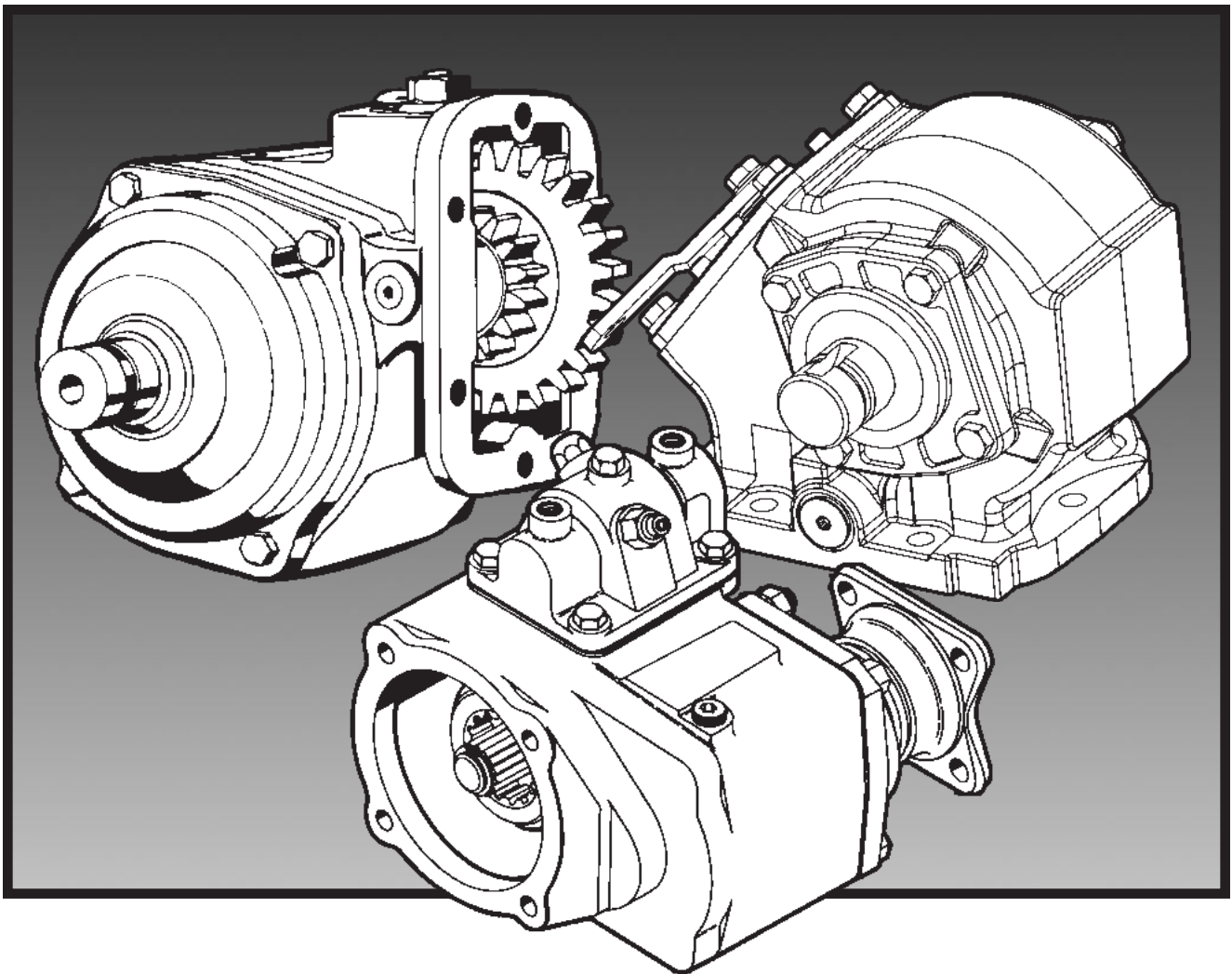


## Parts List 859 Series

Effective: June 15, 2009  
Supersedes: HY25-2859 Dated January 2007

---



---

 **WARNING**

FAILURE OR IMPROPER SELECTION OR IMPROPER USE OF THE PRODUCTS AND/OR SYSTEMS DESCRIBED HEREIN OR RELATED ITEMS CAN CAUSE DEATH, PERSONAL INJURY AND PROPERTY DAMAGE.

This document and other information from Parker Hannifin Corporation, its subsidiaries and authorized distributors provide product and/or system options for further investigation by users having technical expertise. It is important that you analyze all aspects of your application and review the information concerning the product or system in the current product catalog. Due to the variety of operating conditions and applications for these products or systems, the user, through its own analysis and testing, is solely responsible for making the final selection of the products and systems and assuring that all performance, safety and warning requirements of the application are met.

The products described herein, including without limitation, product features, specifications, designs, availability and pricing, are subject to change by Parker Hannifin Corporation and its subsidiaries at any time without notice.

**Offer of Sale**

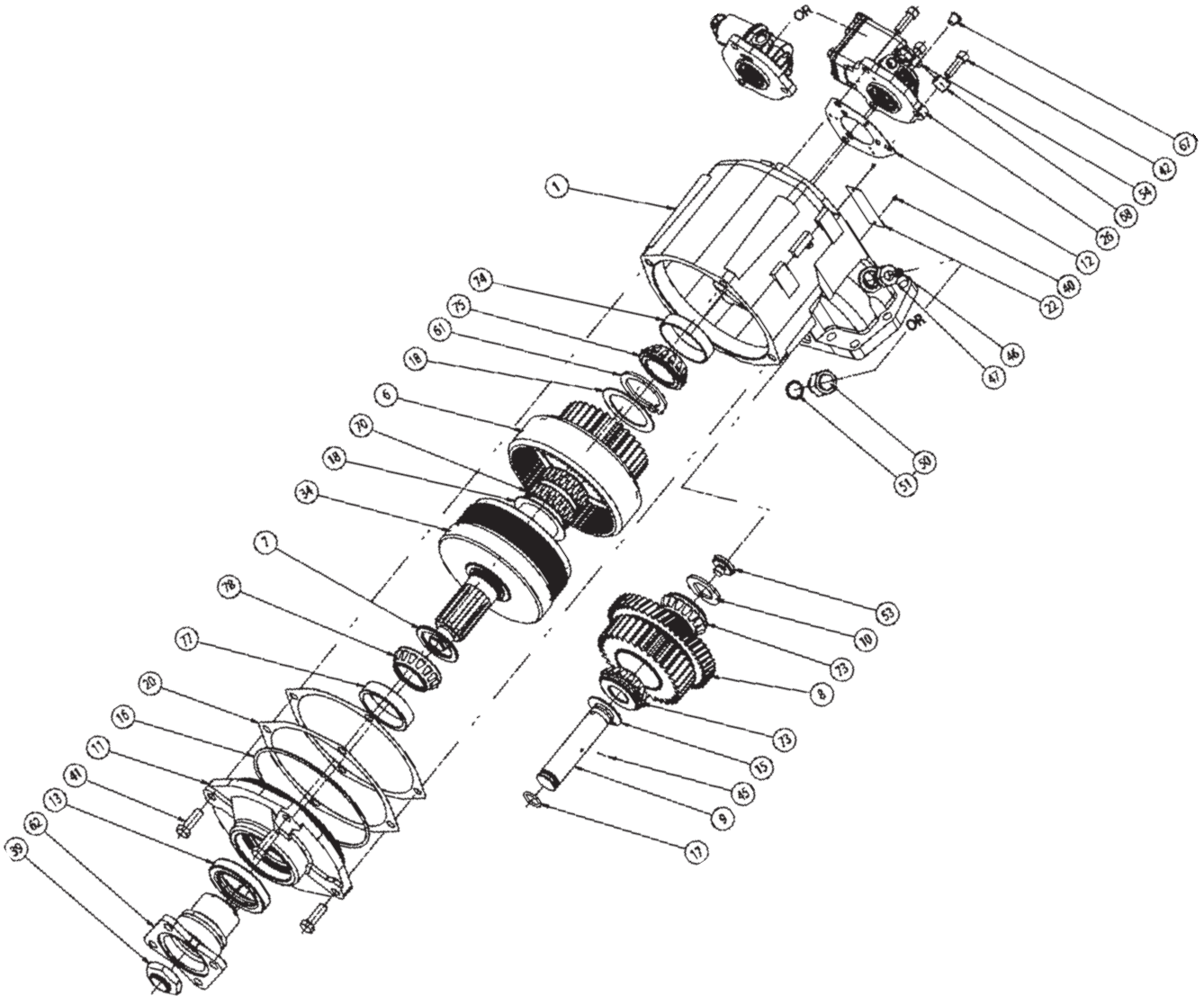
The items described in this document are hereby offered for sale by Parker Hannifin Corporation, its subsidiaries or its authorized distributors. This offer and its acceptance are governed by the provisions stated in the "Offer of Sale".

© Copyright 2009, Parker Hannifin Corporation, All Rights Reserved

**Contents**

---

Exploded View .....	1
Bill of Materials .....	2-3
P.T.O. Options .....	4
Model Number Designation .....	4
Gear and Hose Charts .....	5
Pump Conversion Kit .....	6
Flange Bills of Materials .....	6-8
Drive Shaft & Clutch Assembly Bill of Materials .....	9
Pump Flange & Shaft Dimensions.....	10
P.T.O. Housing Dimensions.....	11
Installation Drawings .....	12-14
Offer of Sale .....	16



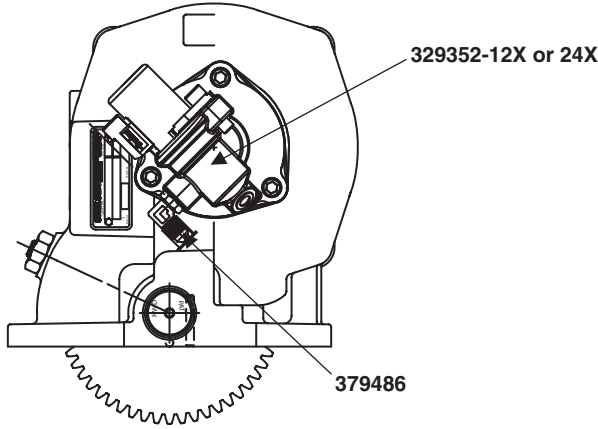
Bill of Materials

Item	Part Number	Description	Quantity
1	1-P-609X	PTO Housing .....	1
6	See Page 5	Output Gear .....	1
7	See Below	Spacer, Drive Shaft .....	1
	4-P-162	Spacer "XV" Output	
	See Page 6 & 7	Spacer (All Other Outputs)	
8	See Page 5	Input Gear .....	1
9	9-P-92	Idler Shaft (Pressure Lube) .....	1
10	14-P-80-1	Tabbed Washer (.110"-.112") .....	1or
	14-P-80-2	Tabbed Washer (.115"-.117") .....	1or
	14-P-80-3	Tabbed Washer (.120"-.122") .....	1or
	14-P-80-4	Tabbed Washer (.124"-.126") .....	1
11	See Below	Bearing Cap .....	1
	21-P-517	Bearing Cap ("XV" Output)	
	See Page 6 & 7	Bearing Cap (All Other Outputs)	
12	22-P-112	Gasket, Valve Cap .....	1
13	See Below	Oil Seal.....	1
	28-P-211	Oil Seal ("XV" Output)	
	See Page 6 & 7	Oil Seal (All Other Outputs)	
15	31-P-94	Thrust Washer .....	1
16	28-P-196	O-Ring.....	1
17	28-P-198	O-Ring .....	1
18	31-P-92	Thrust Washer .....	2
20	55-P-20-1	Shim, Bearing Cap (.003 Green).....	A.R.
	55-P-20-2	Shim, Bearing Cap (.010 Brown)	
	55-P-20-3	Shim, Bearing Cap (.020 Yellow)	
22	68-P-2	Name Plate .....	1
24	329252X	Seal Cap Assembly ("G" & "H" Shift Only).....	1
26	329352-12X	Valve & Valve Cap Assembly (12V) .....	1 or
	329352-24X	Valve & Valve Cap Assembly (24V).....	1 or
	329442-12X	Valve & Valve Cap Assembly (12V) ("KV" Pitch Only) .....	1 or
	329442-24X	Valve & Valve Cap Assembly (24V) ("KV" Pitch Only) .....	1
34	See Below	Drive Shaft & Clutch Ass'y .....	1
	329647-1X	Drive Shaft & Clutch Ass'y (3-P-1024) ("AB", "AC", "XV" Output)	
	See Page 6 & 7	Drive Shaft & Clutch Ass'y (All Other Outputs)	
39	378382	Hex Locknut ("XV", "AB", "AC" Only) .....	1
40	378422	Drive Screw .....	2
41	378431-11	Hex Capscrew .375"-16 x 1.125" .....	4
42	378447-6	Soc Capscrew .312"-18 x 1.000".....	3
45	378856	Wiggler Wire.....	1
46	379231	Pipe Plug .125"-27 NPTF (Without E.O.C. Only).....	1
47	379242	O-Ring Boss Plug.....	1
50	28-P-171	O-Ring (With E.O.C. Only).....	1
51	379243	Speed Sensor .....	1
53	379719	NWD Plug .....	1
54	379486	90° Elbow, O-Ring Boss.....	1
61	379511	Lockring (5160-200) .....	1
62	See Below	Companion Flange.....	1
	3-1-3431	Companion Flange ("XV" Output)	
	See Page 6 & 7	Companion Flange (All Other Outputs)	

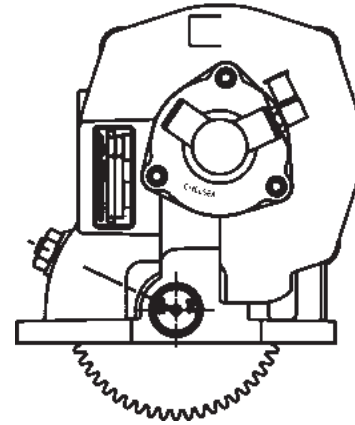
A.R. — As Required

**Bill of Materials**

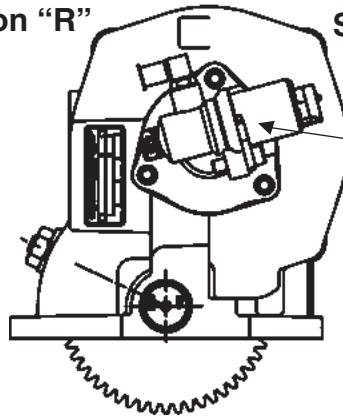
Item	Part Number	Description	Quantity
67	500897-3	Shipping Plug .....	1
68	379564-2	Shipping Cap ("G" & "H" Shift Qty. 3) .....	3
70	560975	Caged Roller Bearing .....	2
73	560978	Tapered Bearing Cone .....	2
74	560982	Tapered Bearing Cup .....	1
75	560986	Tapered Bearing Cone .....	1
77	See Below 560982 <a href="#">See Page 6 &amp; 7</a>	Tapered Bearing Cup .....	1
		Tapered Bearing Cup ("XV" Output)	
		Tapered Bearing Cup (All Other Outputs)	
78	See Below 560986 <a href="#">See Page 6 &amp; 7</a>	Tapered Bearing Cone .....	1
		Tapered Bearing Cone ("XV" Output)	
		Tapered Bearing Cone (All Other Outputs)	
		<b>Loose Parts</b>	
	7170-86X	Mounting Kit ("FJ" Input) .....	1
	7170-118X	Mounting Kit ("KV" Input) .....	1
	328948-9X	Gasket & Installation Instructions .....	1
	329141-1X	Hose Assembly .....	1
	329130-1X	Hose Assembly (Remote Valve Option Only) .....	1
	328075X	Hose Assembly (Remote Valve Option Only) .....	1
	328924-12X	Control Box 12V (With E.O.C.) .....	1 or
	328924-24X	Control Box 24V (With E.O.C.) .....	1
	See Below	<b>Installation Kit</b>	
		<b>Allison</b>	
	329024-12X	Installation Kit 12V w/o E.O.C. ....	1 or
	329024-24X	Installation Kit 24V w/o E.O.C. ....	1 or
	329076X	Installation Kit 12V & 24V (With E.O.C.) .....	1 or
	329237-12X	Installation Kit 12V Remote Valve .....	1 or
	329237-24X	Installation Kit 24V Remote Valve .....	1
		<b>Caterpillar</b>	
	329443-12X	Installation Kit 12V .....	1 or
	329443-24X	Installation Kit 24V .....	1 or
	329444X	Installation Kit 12 & 24 Volt (With E.O.C.) .....	1 or
	329445-12X	Installation Kit 12V Remote Valve .....	1 or
	329445-24X	Installation Kit 24V Remote Valve .....	1 or
		<b>Service Kits</b>	
	329071-20X	Gasket And Seal Kit	
	329071-37X	Bearing Kit	
	329071-8X	Clutch Repair Kit	
	329175-12X	Conversion Kit 12V Remote Valve	
	329447-12X	Kit, Remote Valve Conversion 12V ("KV" Input)	
	329447-24X	Kit, Remote Valve Conversion 24V ("KV" Input)	
	329175-12X	E.O.C. Field Conversion Kit 12V	
	329175-24X	E.O.C. Field Conversion Kit 24V	
	329240-12X	Conversion Kit 12V Remote Mount Valve	
	329240-24X	Conversion Kit 24V Remote Mount Valve	



**859 Lubrication Option "R"**

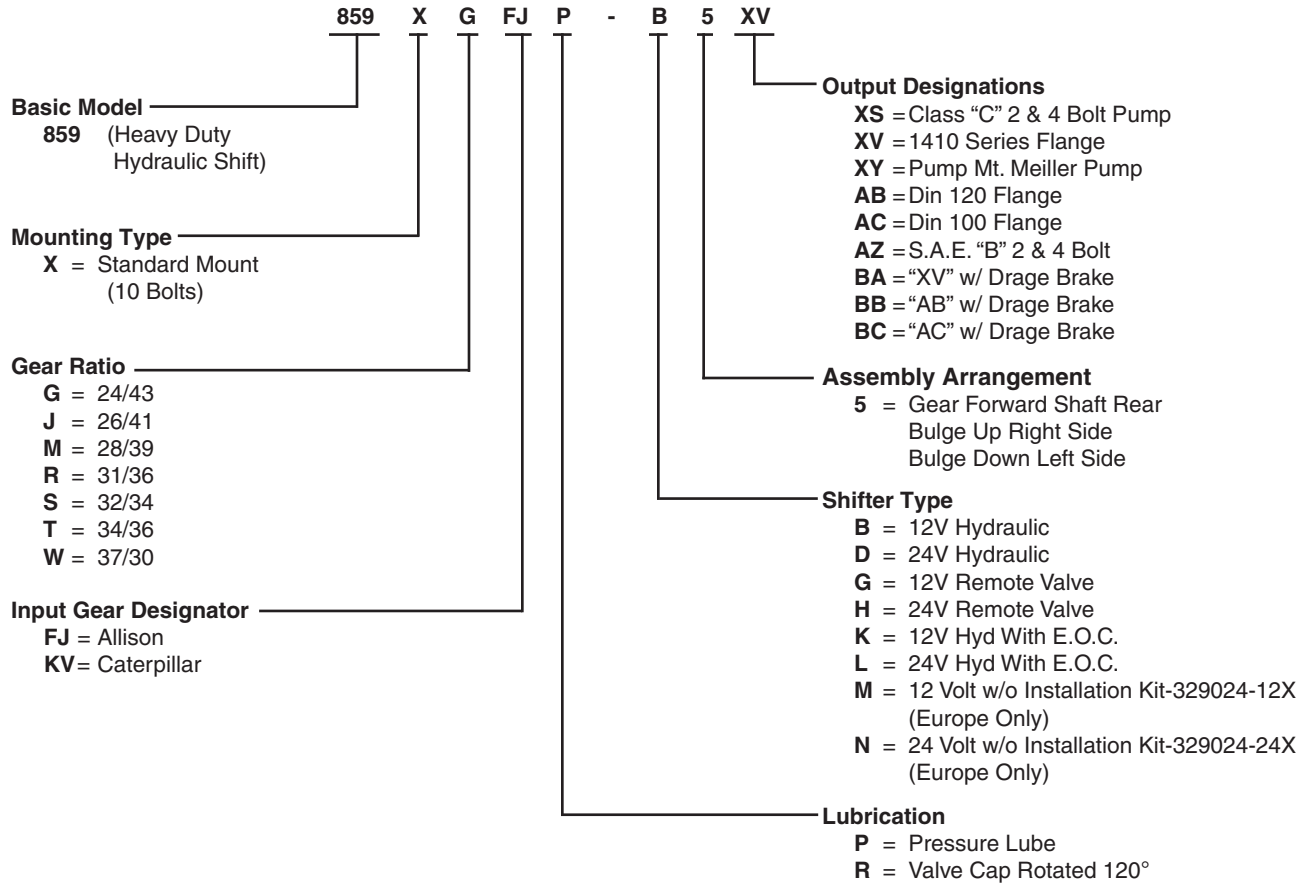


**Shifter Options "G" & "H" for Remote Mounted Value**



**View "KV" Input Gear**

**Model Number Designation**



**Gear and Hose Charts**

**Gear Chart**

Model Number	Input Gear Part Number Item No. 4	Helix Angle	Number Teeth Lg/Sm	Output Gear Item No. 2	
				Part Number	Number Teeth
859*GFJ	5-P-1160	RH	50/24	2-P-752	43
859*JFJ	5-P-1394	RH	50/26	2-P-827	41
859*MFJ	5-P-1161	RH	50/28	2-P-753	39
859*RFJ	5-P-1162	RH	50/31	2-P-754	36
859*SFJ	5-P-1392	RH	50/32	2-P-826	34
859*TFJ	5-P-1212	RH	50/34	2-P-764	33
859*WFJ	5-P-1309	RH	50/35	2-P-796	28
859*GKV	5-P-1360	LH	45/24	2-P-752	43
859*JKV	5-P-1397	LH	45/26	2-P-827	41
859*MKV	5-P-1398	LH	45/28	2-P-753	39
859*RKV	5-P-1399	LH	45/31	2-P-754	36
859*SKV	5-P-1400	LH	45/32	2-P-826	34
859*TKV	5-P-1401	LH	45/34	2-P-764	33

**Hose Chart Allison**

Pressure Hose Chart (Transmission to P.T.O.)			
Trans	Location	Hose	Comments
MD	Left	329130-5X	26.5" w/o Hose Clamp
MD	Right	329075-1X	26.5" w/ Hose Clamp
HD	Left	329130-4X	22.0" w/o Hose Clamp
HD	Top Right	329075-2X	42.0" w/ Hose Clamp
MD	Left	329130-5X	26.5" w/o Hose Clamp
MD	Right	329075-1X	26.5" w/ Hose Clamp
HD	Left	329130-5X	26.5" w/o Hose Clamp
HD	Top Right	329075-4X	47.0" w/ Hose Clamp

**Hose Chart Caterpillar**

Trans.	P.T.O.	P.T.O. Location	High Oil Pressure Location	P.T.O. Valve Location	P.T.O. Fitting	Trans. Fitting	Trans.-P.T.O. Valve Hose #
CX31	859	Driver (LHS)	LHS	Attached	379486	379812	329075-1X
		Driver (LHS)	Rear				329075-5X
		Pass. (RHS)	LHS				329075-5X
		Pass. (RHS)	Rear				329075-5X
		Driver (LHS)	LHS	Remote	379486	379812	329130-6X
		Driver (LHS)	Rear				329130-6X
		Pass. (RHS)	LHS				329130-6X
		Pass. (RHS)	Rear				329130-6X

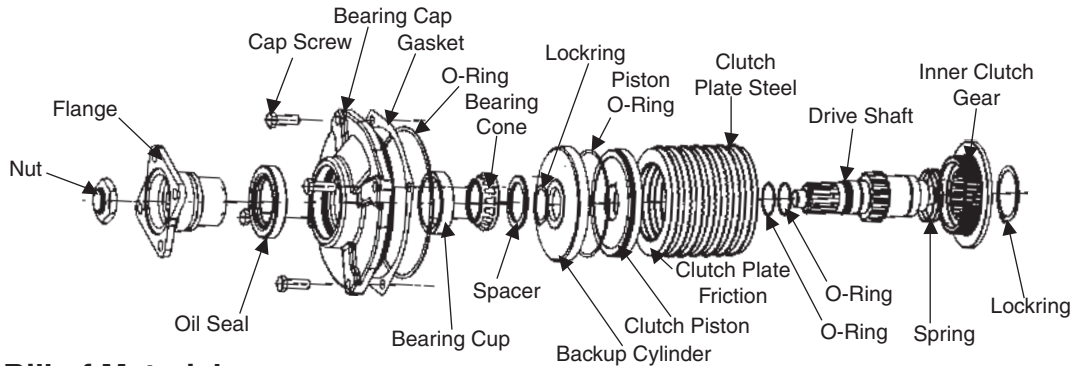
LHS = Left Side of Transmission, 8 o'clock position  
RHS = Right Side of Transmission, 1 o'clock position

**NOTES:**

1. P.T.O. Fitting 379486 and Transmission Fitting 379812 included with the P.T.O. Unit. If Using 379486 in Transmission it Must be Purchased Separately
2. Hoses to be Purchased Separately



Flange Suffix	Flange Type	Shaft Type	Conversion Kit
AB	DIN 120	1.5" - 10 Teeth	None
AC	DIN 100	1.5" - 10 Teeth	None
AZ	S.A.E. "B" 2 or 4 Bolt	S.A.E. "C", 1.25" - 14 Teeth	329160-44X
XS	S.A.E. "C" 2 or 4 Bolt	S.A.E. "C", 1.25" - 14 Teeth	329160-29X
XY	DIN 5462	88 x 32 x 6 - 8 Teeth	329160-40X
BA (XV)	1410 w/ Drage Brake Flange	1.5" - 10 Teeth	-
BB (AB)	DIN 120 w/ Drage Brake Flange	1.5" - 10 Teeth	329160-60X
BC (AC)	DIN 100 w/ Drage Brake Flange	1.5" - 10 Teeth	329160-60X



**Flange Bill of Materials**

Item	Part Number	Description	Quantity
AB	4-P-162	Spacer .....	1
	21-P-517	Bearing Cap .....	1
	28-P-211	Oil Seal .....	1
	329647-1X	Drive Shaft Assembly .....	1
	3-P-1024	Output Shaft .....	1
	28-P-194	O-Ring .....	2
	28-P-260	O-Ring .....	1
	37-P-24	Spring .....	1
	379531-1	Piston .....	1
	379523-1	Back-up Cylinder .....	1
	2-P-844	Inner Clutch Gear .....	1
	379776	Clutch Plate (Steel) .....	7
	379489	Clutch Plate (Friction) .....	8
	379465	Lockring .....	1
	380080	Lockring .....	1
	378431-11	Hex Cap Screw (.375"-16 x 1.125") .....	4
	378382	Hex Locknut .....	1
	379558	Companion Flange .....	1
	560982	Bearing Cup .....	1
	560986	Bearing Cone .....	1
AC	4-P-162	Spacer .....	1
	21-P-517	Bearing Cap .....	1
	28-P-211	Oil Seal .....	1
	329647-1X	Drive Shaft Assembly .....	1
	3-P-1024	Output Shaft .....	1
	28-P-194	O-Ring .....	2
	28-P-260	O-Ring .....	1
	37-P-24	Spring .....	1
	379531-1	Piston .....	1
	379523-1	Back-up Cylinder .....	1
	2-P-844	Inner Clutch Gear .....	1
	379776	Clutch Plate (Steel) .....	7
	379489	Clutch Plate (Friction) .....	8
	379465	Lockring .....	1
	380080	Lockring .....	1
	378431-11	Hex Cap Screw (.375"-16 x 1.125") .....	4

Continued on Next Page

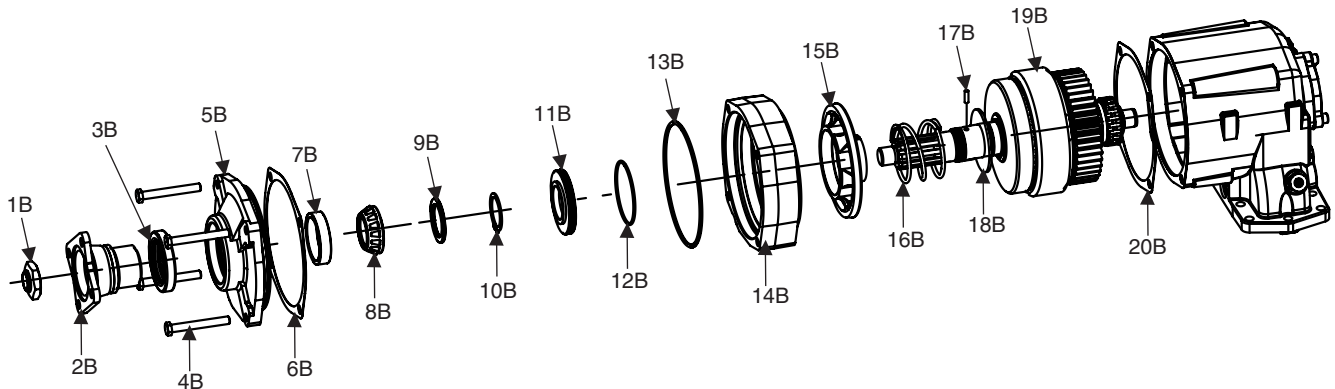
Item	Part Number	Description	Quantity
AZ	379742	Companion Flange .....	1
	560982	Bearing Cup .....	1
	560986	Bearing Cone .....	1
	4-P-161	Spacer .....	1
	21-P-539	Bearing Cap .....	1
	28-P-219	Oil Seal .....	1
	329647-2X	Drive Shaft Assembly .....	1
	3-P-1025	Output Shaft .....	1
	28-P-194	O-Ring .....	2
	28-P-260	O-Ring .....	1
	37-P-24	Spring .....	1
	379531-1	Piston .....	1
	379523-1	Back-up Cylinder .....	1
	2-P-844	Inner Clutch Gear .....	1
	379776	Clutch Plate (Steel) .....	7
	379489	Clutch Plate (Friction) .....	8
	379465	Lockring .....	1
	380080	Lockring .....	1
	378431-11	Hex Cap Screw (.375"-16 x 1.125") .....	4
560977	Bearing Cup .....	1	
560976	Bearing Cone .....	1	
XS	4-P-161	Spacer .....	1
	21-P-515	Bearing Cap .....	1 or
	21-P-544	Bearing Cap (Wet Spline) .....	1
	28-P-219	Oil Seal .....	1
	329647-2X	Drive Shaft Assembly .....	1
	3-P-1025	Output Shaft .....	1
	28-P-194	O-Ring .....	2
	28-P-260	O-Ring .....	1
	37-P-24	Spring .....	1
	379531-1	Piston .....	1
	379523-1	Back-up Cylinder .....	1
	2-P-844	Inner Clutch Gear .....	1
	379776	Clutch Plate (Steel) .....	7
	379489	Clutch Plate (Friction) .....	8
	379465	Lockring .....	1
	380080	Lockring .....	1
	379231	Pipe Plug (Wet Spline) .....	1
	378431-11	Hex Cap Screw (.375"-16 x 1.125") .....	4
	560977	Bearing Cup .....	1
560976	Bearing Cone .....	1	
XY	4-P-182	Spacer .....	1
	21-P-615	Bearing Cap .....	1
	28-P-275	Oil Seal .....	1
	329647-3X	Drive Shaft Assembly .....	1
	3-P-1026	Output Shaft .....	1
	28-P-194	O-Ring .....	2
	28-P-260	O-Ring .....	1
	37-P-24	Spring .....	1
	379531-1	Piston .....	1
	379523-1	Back-up Cylinder .....	1
	2-P-844	Inner Clutch Gear .....	1
	379776	Clutch Plate (Steel) .....	7
	379489	Clutch Plate (Friction) .....	8
	379465	Lockring .....	1
	380080	Lockring .....	1
	378431-11	Hex Cap Screw (.375"-16 x 1.125") .....	4
	550258	Bearing Cup .....	1
	550257	Bearing Cone .....	1

Continued on Next Page

**Flange Bill of Materials**

Item	Part Number	Description	Quantity
	379560	Spline Coupling .....	1
	378898	Flat Head Socket Screw (.438"-14 x 1.000") .....	1
	379231	Pipe Plug (.125"-27) .....	1

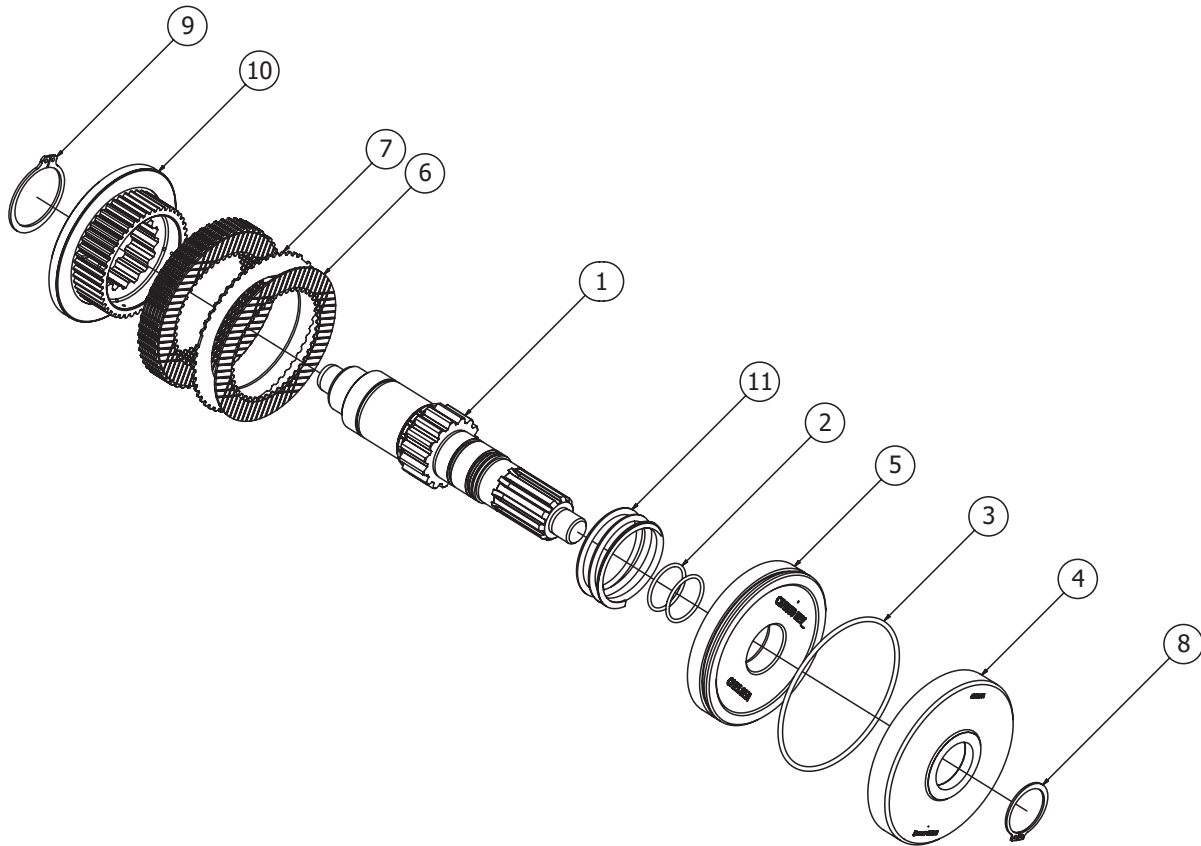
**BA, BB & BC Outputs**



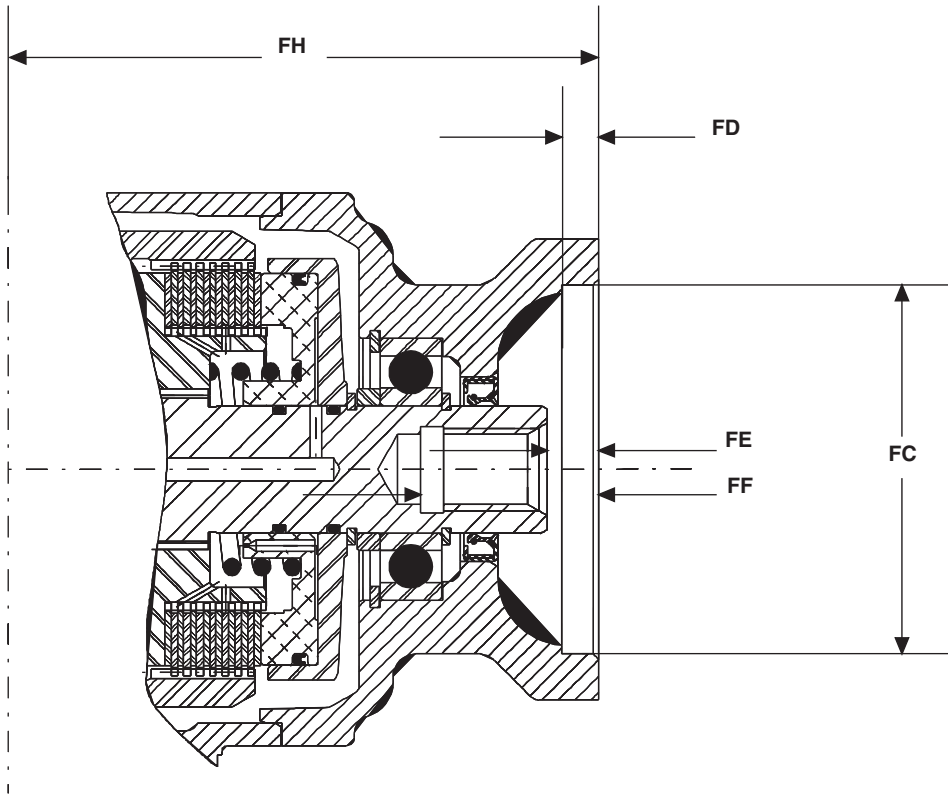
Item	Part Number	Description	Quantity
1B	378382	Hex Lock Nut .....	1
2B	3-1-3431	Companion Flange (1410 Series) .....	1 or
	379742	Companion Flange (DIN100).....	1 or
	379558	Companion Flange (DIN120).....	1
3B	28-P-211	Oil Seal.....	1
4B	378431-26	Hex Capscrew 3.75"-16 x 1.125".....	4
5B	21-P-517	Bearing Cap .....	1
6B	55-P-20-1	Bearing Cap SHIM (.003 Green) .....	A.R.
	55-P-20-2	Bearing Cap SHIM (.010 Brown)	
	55-P-20-3	Bearing Cap SHIM (.020 Yellow)	
7B	560982	Bearing Cap .....	1
8B	560986	Bearing Cone .....	1
9B	379746	Lock Ring.....	1
10B	31-P-70	Spacer .....	1
11B	66-P-50	Piston.....	1
12B	28-P-252	O-Ring .....	1
13B	28-P-196	O-Ring .....	1
14B	23-P-71	Bearing Cap Spacer .....	1
15B	380007	Brake Disc .....	1
16B	37-P-60	Spring .....	1
17B	379977	Pin .....	1
18B	31-P-116	Thrust Washer .....	1
19B	See page 9	Drive Shaft & Clutch Ass'y.....	1
20B	22-P-98	Gasket .....	1

A.R. — As Required

**329647 - \*X**

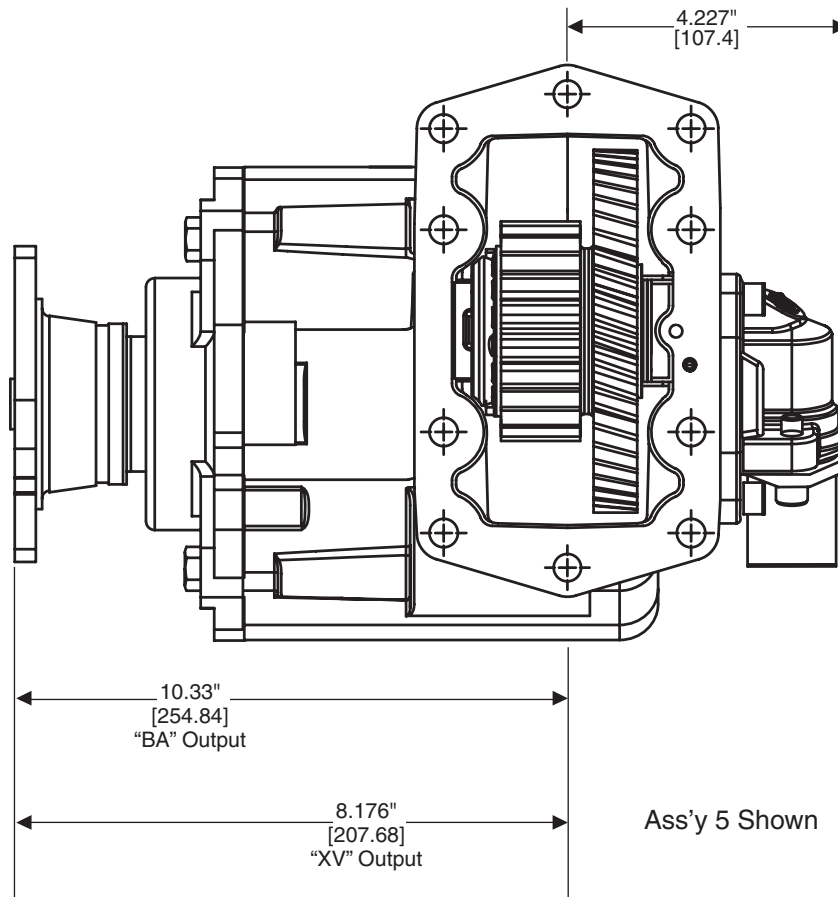
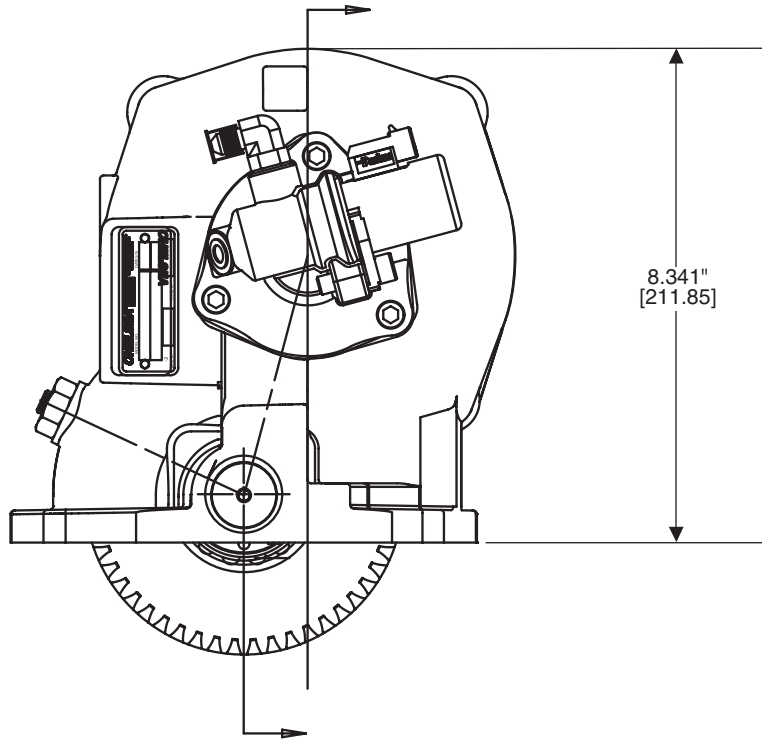


Item	Part Number	Description	Quantity
1	3-P-1024 3-P-1025 3-P-1026 3-P-1027	Shaft, Output 10T Straight ("AB", "AC", "XV") (329647-1X) ..... Shaft, Output 10T Straight 1-1/4 T. ("AZ", "XS") (329647-2X) ..... Shaft, Output 10T Straight 10T. Straight ("XY") (329647-3X) ..... Shaft, Output 10T Straight 10T. Straight ("BA", "BB", "BC") (329647-4X) .....	1 or 1 or 1 or 1
2	28-P-194	O-Ring (1.424" x .103") ("BA", "BB", "BC") ..... (All Others) .....	4 2
3	28-P-260	O-Ring (4.984" x .139") .....	1
4	379523-1	Cylinder Clutch Back-up .....	1
5	379531-1	Piston Clutch .....	1
6	379489	Disc Friction .....	8
7	379776	Plate Clutch .....	7
8	379465	Lockring .....	1
9	380080	Lockring .....	1
10	2-P-844	Gear, Clutch Inner .....	1
11	37-P-24	Spring (2.531" x 2.13") .....	1



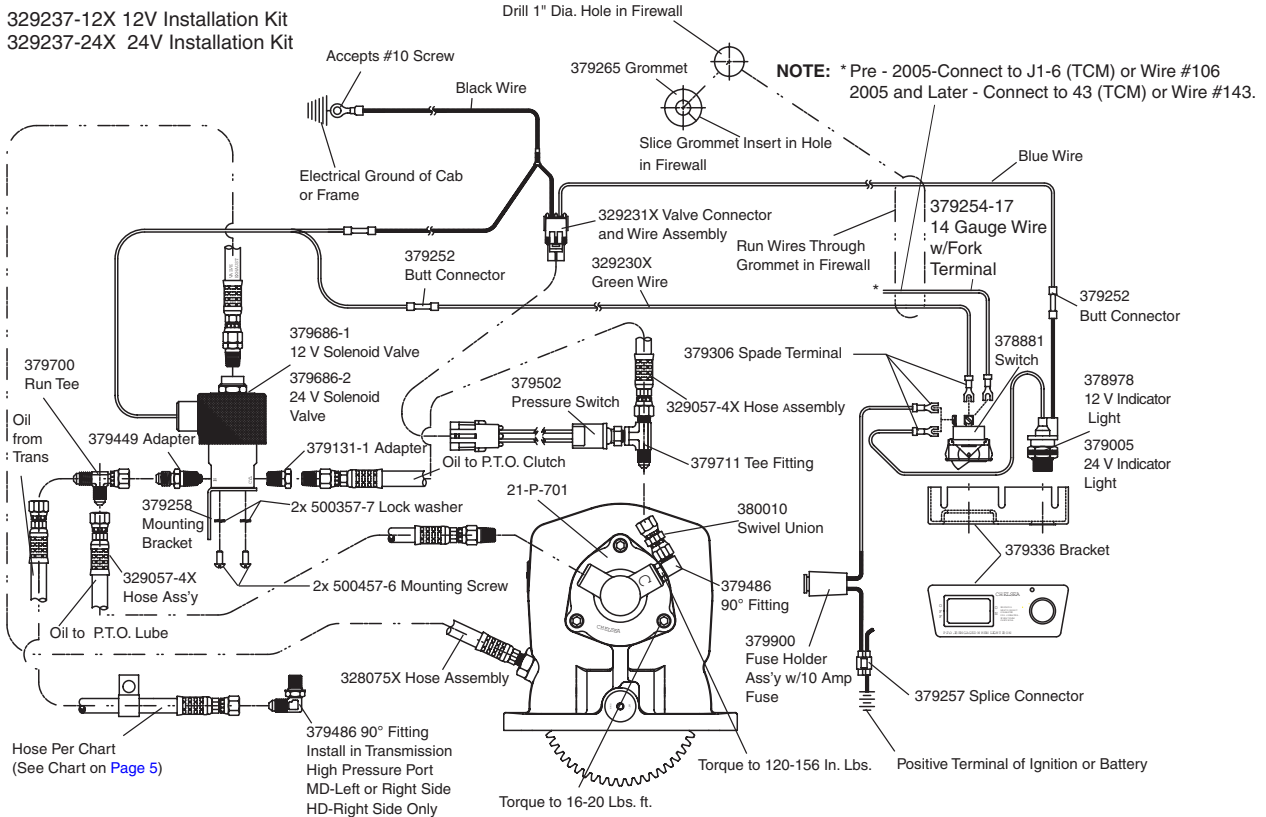
Pump Flange Suffix	Bolt Circle Diameter	BOLT HOLES		FC Female Pilot Diameter	FD Pilot Depth	FE Face To End Of Shaft	FF Face Thru Hole	FH Face To Center Of P.T.O.	OUTPUT SHAFT Hole Diameter
		Tapered Hole	No. Equally Spaced						
AZ	5.750"-2 5.000"-8	.500"-13		$\frac{4.004"}{4.002"}$	.436"	.348"	2.392"	7.299"	1.25"-14 Spline
XS	7.125" 6.375"	.625"-11 .500"-13	2 4	$\frac{5.002"}{5.004"}$	.531"	.699"	2.574"	7.607"	1.25"-14 Spline
XY	4.455" (113-157)	M12-1.75"	4	$\frac{3.151"}{3.153"}$ (80.035) (80.086)	.394" (10.007)	.516" (13.106)	2.500" (63.500)	9.153" (232.486)	8- Spline DIN 5462

Numbers in parenthesis are mm.



**Shift Installation Kit 859 Series with Remote Mount Solenoid (SK-432 Rev C) Allison**

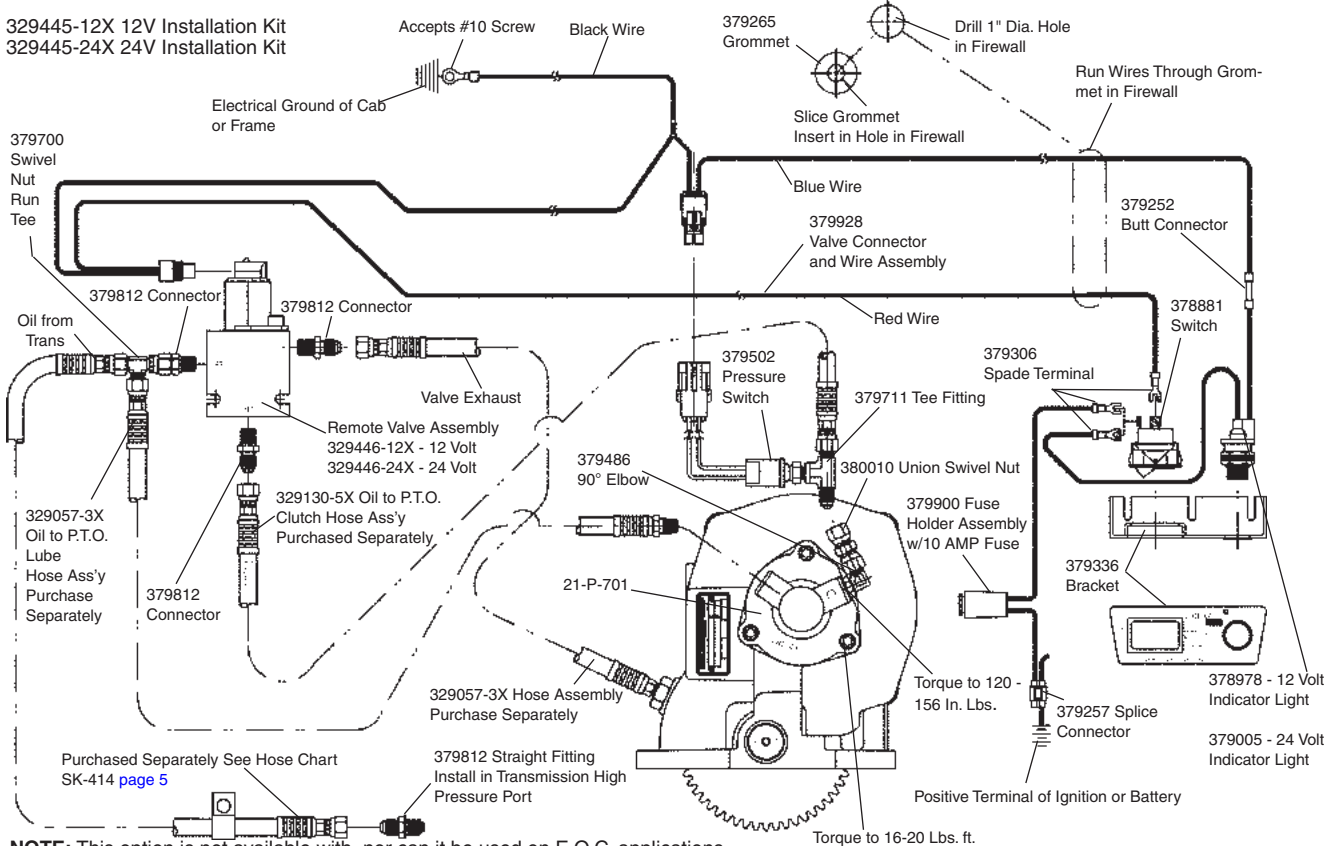
329237-12X 12V Installation Kit  
 329237-24X 24V Installation Kit



**NOTE:** This option is not available with nor can it be used on E.O.C. applications.

**Remote Mount Installation Sketch for 859 Series (SK-413 Rev C) Caterpillar**

329445-12X 12V Installation Kit  
 329445-24X 24V Installation Kit

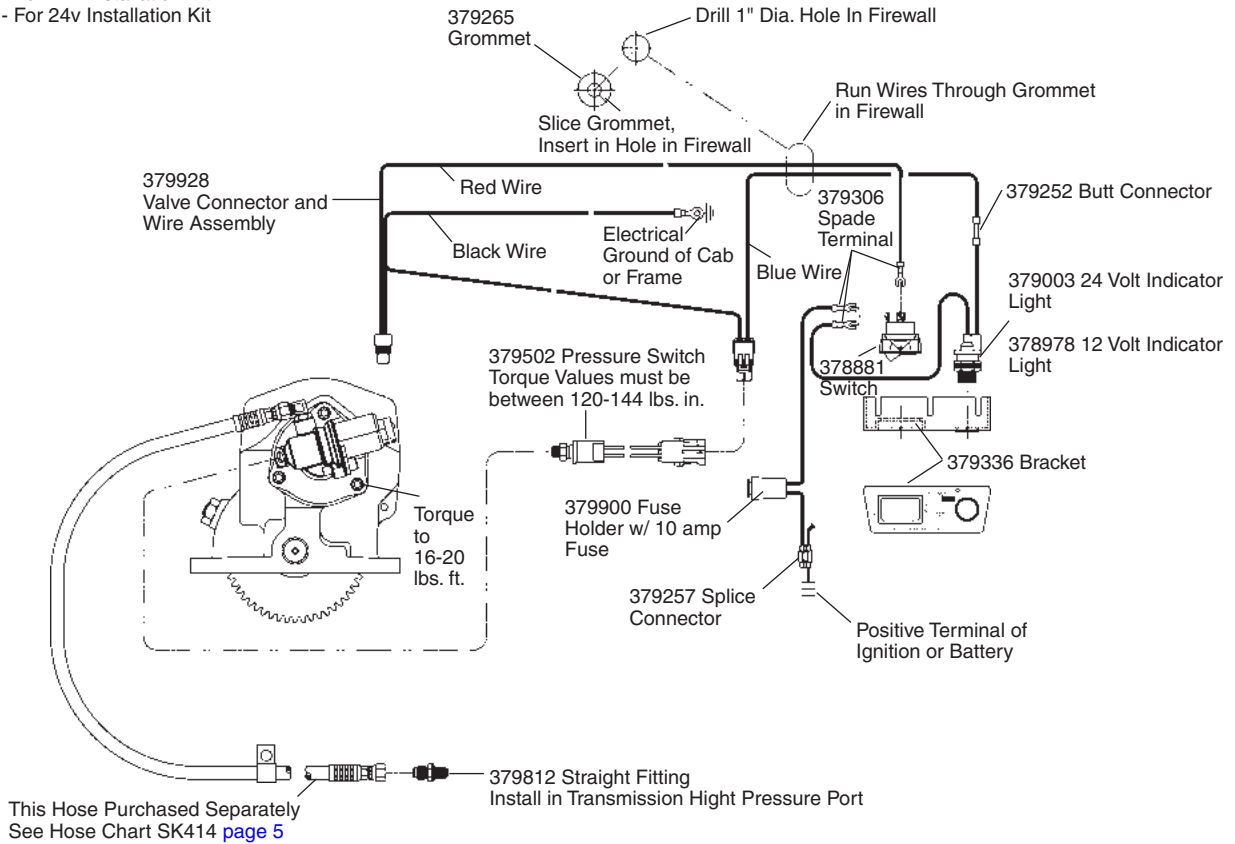


**NOTE:** This option is not available with, nor can it be used on E.O.C. applications.

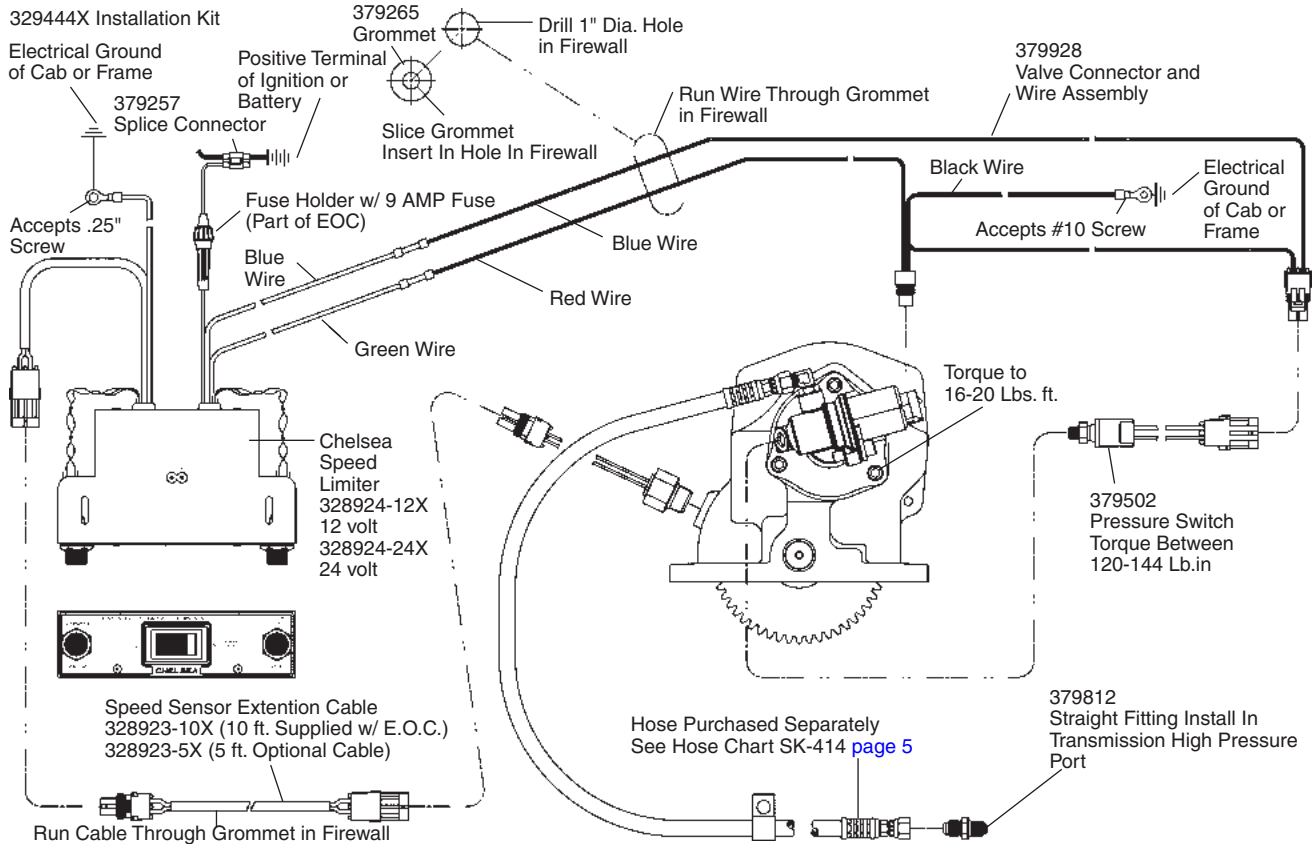


**Shift Installation Kit 859 Series Without E.O.C. (SK-411 Rev A) Caterpillar**

329443-12X - For 12v Installation Kit  
 329443-24X - For 24v Installation Kit



**E.O.C. Installation Sketch for 859 Series (SK-412 Rev A) Caterpillar**









## Offer of Sale

The items described in this document and other documents or descriptions provided by Parker Hannifin Corporation, its subsidiaries and its authorized distributors are hereby offered for sale at prices to be established by Parker Hannifin Corporation, its subsidiaries and its authorized distributors. This offer and its acceptance by any customer ("Buyer") shall be governed by all of the following Terms and Conditions. Buyer's order for any such items, when communicated to Parker Hannifin Corporation, its subsidiary or an authorized distributor ("Seller") verbally or in writing, shall constitute acceptance of this offer.

**1. Terms and Conditions of Sale:** All descriptions, quotations, proposals, offers, acknowledgments, acceptances and sales of Seller's products are subject to and shall be governed exclusively by the terms and conditions stated herein. Buyer's acceptance of any offer to sell is limited to these terms and conditions. Any terms or conditions in addition to, or inconsistent with those stated herein, proposed by Buyer in any acceptance of an offer by Seller, are hereby objected to. No such additional, different or inconsistent terms and conditions shall become part of the contract between Buyer and Seller unless expressly accepted in writing by Seller. Seller's acceptance of any offer to purchase by Buyer is expressly conditional upon Buyer's assent to all the terms and conditions stated herein, including any terms in addition to, or inconsistent with those contained in Buyer's offer. Acceptance of Seller's products shall in all events constitute such assent.

**2. Payment:** Payment shall be made by Buyer net 30 days from the date of delivery of the items purchased hereunder. Amounts not timely paid shall bear interest at the maximum rate permitted by law for each month or portion thereof that the Buyer is late in making payment. Any claims by Buyer for omissions or shortages in a shipment shall be waived unless Seller receives notice thereof within 30 days after Buyer's receipt of the shipment.

**3. Delivery:** Unless otherwise provided on the face hereof, delivery shall be made F.O.B. Seller's plant. Regardless of the method of delivery, however, risk of loss shall pass to Buyer upon Seller's delivery to a carrier. Any delivery dates shown are approximate only and Seller shall have no liability for any delays in delivery.

**4. Warranty:** Seller warrants that the items sold hereunder shall be free from defects in material or workmanship for a period of:

(A) All Power Take-Off units 18 months from date of sale.

(B) Except 267, 269, 277, 278, 246, 247, 250, and 859 series two (2) years from date of installation. **THIS WARRANTY COMPRISES THE SOLE AND ENTIRE WARRANTY PERTAINING TO ITEMS PROVIDED HEREUNDER. SELLER MAKES NO OTHER WARRANTY, GUARANTEE, OR REPRESENTATION OF ANY KIND WHATSOEVER. ALL OTHER WARRANTIES, INCLUDING BUT NOT LIMITED TO, MERCHANTABILITY AND FITNESS FOR PURPOSE, WHETHER EXPRESS, IMPLIED, OR ARISING BY OPERATION OF LAW, TRADE USAGE, OR COURSE OF DEALING ARE HEREBY DISCLAIMED. NOTWITHSTANDING THE FOREGOING, THERE ARE NO WARRANTIES WHATSOEVER ON ITEMS BUILT OR ACQUIRED WHOLLY OR PARTIALLY, TO BUYER'S DESIGNS OR SPECIFICATIONS.**

**5. Limitation Of Remedy: SELLER'S LIABILITY ARISING FROM OR IN ANY WAY CONNECTED WITH THE ITEMS SOLD OR THIS CONTRACT SHALL BE LIMITED EXCLUSIVELY TO REPAIR OR REPLACEMENT OF THE ITEMS SOLD OR REFUND OF THE PURCHASE PRICE PAID BY BUYER, AT SELLER'S SOLE OPTION. IN NO EVENT SHALL SELLER BE LIABLE FOR ANY INCIDENTAL, CONSEQUENTIAL OR SPECIAL DAMAGES OF ANY KIND OR NATURE WHATSOEVER, INCLUDING BUT NOT LIMITED TO LOST PROFITS ARISING FROM OR IN ANY WAY CONNECTED WITH THIS AGREEMENT OR ITEMS SOLD HEREUNDER, WHETHER ALLEGED TO ARISE FROM BREACH OF CONTRACT, EXPRESS OR IMPLIED WARRANTY, OR IN TORT, INCLUDING WITHOUT LIMITATION, NEGLIGENCE, FAILURE TO WARN OR STRICT LIABILITY.**

**6. Changes, Reschedules and Cancellations:** Buyer may request to modify the designs or specifications for the items sold hereunder as well as the quantities and delivery dates thereof, or may request to cancel all or part of this order, however, no such requested modification or cancellation shall become part of the contract between Buyer and Seller unless accepted by Seller in a written amendment to this Agreement. Acceptance of any such requested modification or cancellation shall be at Seller's discretion, and shall be upon such terms and conditions as Seller may require.

**7. Special Tooling:** A tooling charge may be imposed for any special tooling, including without limitation, dies, fixtures, molds and patterns, acquired to manufacture items sold pursuant to this contract. Such special tooling shall be and remain Seller's property notwithstanding payment of any charges by Buyer. In no event will Buyer acquire any interest in apparatus belonging to Seller which is utilized in the manufacture of the items sold hereunder, even if such apparatus has been specially converted or adapted for such manufacture and notwithstanding any charges paid by Buyer. Unless otherwise agreed, Seller shall have the right to alter,

discard or otherwise dispose of any special tooling or other property in its sole discretion at any time.

**8. Buyer's Property:** Any designs, tools, patterns, materials, drawings, confidential information or equipment furnished by Buyer or any other items which become Buyer's property, may be considered obsolete and may be destroyed by Seller after two (2) consecutive years have elapsed without Buyer placing an order for the items which are manufactured using such property, Seller shall not be responsible for any loss or damage to such property while it is in Seller's possession or control.

**9. Taxes:** Unless otherwise indicated on the face hereof, all prices and charges are exclusive of excise, sales, use, property, occupational or like taxes which may be imposed by any taxing authority upon the manufacture, sale or delivery of the items sold hereunder. If any such taxes must be paid by Seller or if Seller is liable for the collection of such tax, the amount thereof shall be in addition to the amounts for the items sold. Buyer agrees to pay all such taxes or to reimburse Seller therefore upon receipt of its invoice. If Buyer claims exemption from any sales, use or other tax imposed by any taxing authority, Buyer shall save Seller harmless from and against any such tax, together with any interest or penalties thereon which may be assessed if the items are held to be taxable.

**10. Indemnity For Infringement of Intellectual Property Rights:** Seller shall have no liability for infringement of any patents, trademarks, copyrights, trade dress, trade secrets or similar rights except as provided in this Part 10. Seller will defend and indemnify Buyer against allegations of infringement of U.S. Patents, U.S. Trademarks, copyrights, trade dress and trade secrets (hereinafter 'Intellectual Property Rights'). Seller will defend at its expense and will pay the cost of any settlement or damages awarded in an action brought against Buyer based on an allegation that an item sold pursuant to this contract infringes the Intellectual Property Rights of a third party. Seller's obligation to defend and indemnify Buyer is contingent on Buyer notifying Seller within ten (10) days after Buyer becomes aware of such allegations of infringement, and Seller having sole control over the defense of any allegations or actions including all negotiations for settlement or compromise. If an item sold hereunder is subject to a claim that it infringes the Intellectual Property Rights of a third party, Seller may, at its sole expense and option, procure for Buyer the right to continue using said item, replace or modify said item so as to make it noninfringing, or offer to accept return of said item and return the purchase price less a reasonable allowance for depreciation. Notwithstanding the foregoing, Seller shall have no liability for claims of infringement based on information provided by Buyer, or directed to items delivered hereunder for which the designs are specified in whole or part by Buyer, or infringements resulting from the modification, combination or use in a system of any item sold hereunder. The foregoing provisions of this Part 10 shall constitute Seller's sole and exclusive liability and Buyer's sole and exclusive remedy for infringement of Intellectual Property Rights.

If a claim is based on information provided by Buyer or if the design for an item delivered hereunder is specified in whole or in part by Buyer, Buyer shall defend and indemnify Seller for all costs, expenses or judgments resulting from any claim that such item infringes any patent, trademark, copyright, trade dress, trade secret or any similar right.

**11. Force Majeure:** Seller does not assume the risk of and shall not be liable for delay or failure to perform any of Seller's obligations by reason of circumstances beyond the reasonable control of Seller (hereinafter 'Events of Force Majeure'). Events of Force Majeure shall include without limitation, accidents, acts of God, strikes or labor disputes, acts, laws, rules or regulations of any government or government agency, fires, floods, delays or failures in delivery of carriers or suppliers, shortages of materials and any other cause beyond Seller's control.

**12. Entire Agreement/Governing Law:** The terms and conditions set forth herein, together with any amendments, modifications and any different terms or conditions expressly accepted by Seller in writing, shall constitute the entire Agreement concerning the items sold, and there are no oral or other representations or agreements which pertain thereto. This Agreement shall be governed in all respects by the law of the State of Ohio. No actions arising out of the sale of the items sold hereunder or this Agreement may be brought by either party more than two (2) years after the cause of action accrues.

6/08-P



**Parker Hannifin Corporation**  
Chelsea Products Division  
8225 Hacks Cross Road  
Olive Branch, Mississippi 38654 USA  
Tel: (662) 895-1011  
Fax: (662) 895-1019  
[www.parker.com/chelsea](http://www.parker.com/chelsea)

TG 03/08